

Social Structure of Bilawal Village in Badhra Block of Haryana: A Geographical Analysis

¹Priyanka, ²Megha

¹M.Phil. Geography student, School of Earth Sciences, Banasthali Vidyapith.

²M.Phil. Economics, Department of Economics, Banasthali Vidyapith.

Abstract- There is a considerable lack of micro level studies in today's world. More than half of India's population lives in villages, which are mainly dependent on agriculture. There are many problems faced by the people living in rural areas, in which problem of availability of water, electricity, unemployment and health are major problems. Government periodically applies several policies to increase the level of employment in rural areas and to advance India towards the path of progress. The type of study presents a detailed account of the problems of living in rural areas, such studies in India are needed a lot so that proper planning can be encouraged in small areas too. The present paper includes the study of Bilawal village, Badhra Block, Haryana, to examine the impact of natural environment on social status of the people in the area. The study conducted includes the use of questionnaire and interview for the collection of data. The study uses the Arc GIS 10.2 software for the Preparation of map and further statistical tools for data presentation. The analysis reflects that people in Bilawal are moving towards the secondary activities for employment and scenario is improving with the time.

Keywords: Agriculture, Social Status, Employment, Development, Planning

INTRODUCTION

Socio-economic survey is one of the most important aspects of the detailed study of any area/region. It is also important in order to get more authentic and reliable information in relation to socio economic condition, because they vary from region to region. It helps to understand the problem of the village such as agricultural landscape, cropping pattern, educational development, population structure, occupational status, health care etc. To analyze all these aspects of village, field work is most important as the data published by different sources may not be adequate for various geographical studies. So, we have analysed the social aspects of the village 'Bilawal' which falls in Block 'Badhra' of Charkhi Dadri district. We have carried out the survey for various aspects such as, agricultural landscape, cropping pattern, transport facilities, basic amenities, population structure, educational development and economic and occupational status.

OBJECTIVES

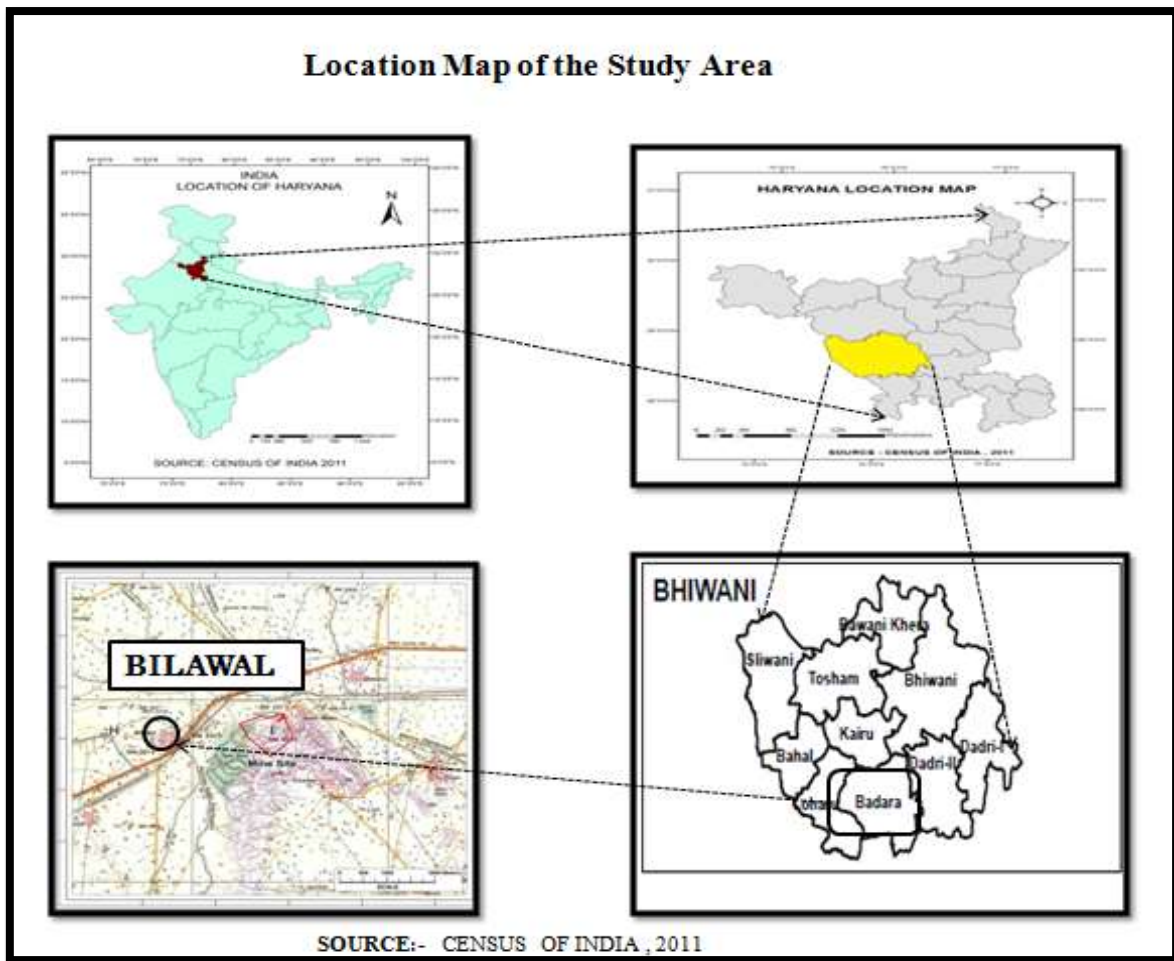
Keeping all these aspects in mind, an attempt has been made to examine the social conditions of the Bilawal village, Charkhi Dadri, Haryana. The main objectives of the study are:-

1. To assess the living conditions - housing, water supply, sanitation condition etc.
2. To examine the social conditions - Age structure, religion, educational structure etc.
3. To examine the area by Geological and Geographical point of view.

STUDY AREA

Bilawal, a small village of Haryana lies between 28°34'28.92" to 28°34'37.01" N latitude to 76 ° 4' 27.86" E to 76° 4' 40.4 E longitudes covering an area of 896 hectares. It is located in Badhra block of Bhiwani which has 10 km distance from Bilawal. As per 2011 census, the total population of the village is 2578, in which the female is 1211 and the male is 1367. The village derives its name from the invitation (Bulana) extended to the people by a ruler to settle at the present site. In this village, there are many Gotras: Beniwal Mahla, Janghu, Nagil, Rangil, Sangwan, Suhag, Singal, Bhatti, Khatak, Tanwar. Atela Khurd (3 KM) , Atela Naya (3 KM) , Dohka Hariya (4 KM) , Barsana (5 KM) , Pichopa Kalan (5 KM) are the nearby Villages to Bilawal. Bilawal is surrounded by Badhra Tehsil towards west, Kairu Tehsil towards west, Dadri-I Tehsil towards East , Bhiwani Tehsil towards North . Charkhi Dadri , Bhiwani , Mahendragarh , Pilani are the nearby Cities to Bilawal.

Figure1. Location Map of Bilawal



CLIMATIC CONDITIONS AND RAINFALL

There are four seasons in a year. The hot weather season starts from mid March to last week of the June followed by the south-west monsoon which lasts upto September. The transition period from September to October forms the post-monsoon season. The winter season starts late in November and remains upto first week of March. The average temperature in Bilawal Village is 24.2 °C. Precipitation here averages 468 mm.

Table1. Population Structure of Bilawal Village

Census Parameter	Census Data
Total Population	2578
Total Male Population	1367
Total Female Population	1211
Total No. of Houses	535
Total Female Population in %	47.0%
Total Literacy Rate	74.08%
Female Literacy Rate	61.28%
Schedule Caste Population	630
Working Population %	36.6%
Child (0-6) Population	286
Girl Child (0-6) Population	134
Total Workers	943
Male Worker	672
Female Worker	271

Main Worker	756
Marginal Worker	187

(Source: Census of India, 2011)

Table2. Connectivity of Bilawal Village

Type	Status
Public Bus Service	Available Within Village
Private Bus Service	Available Within Village
Railway Station	Available Within 10+ KM Distance

DATA BASE

The data is collected from primary as well as secondary sources. The primary sources of the study includes the survey of the study area i.e. Bilawal village (Survey of households). Interview with the respondents on the basis of questionnaire has been held. Sufficient care has been taken to prepare the questionnaire communicable to respondents. The data collected from secondary sources includes various sources such as, various bulletins of offices, Gram Panchayat, Bilawal, Textbooks, Newspapers, Internet, Census of India, 2011.

METHODOLOGY

The following methods have been used in the study:-

1. Questionnaire Method: - Questionnaire prepared consists of questions relating to the problems of the study like living standard, housing condition, sanitation facilities, health problems, water availability etc.

2. Sampling: - Sampling is a process of selecting a sample from whole population .A Sample is true representation of the whole population.

- Selection of area- Bilawal village was selected based on its physiographic variability in form of presence of morphological features like water fall in the nearby village, various rock types, relatively different socio-economic condition etc.
- Random sampling- A process of selecting sample in which every individuals has equal probability of being selected in the sample. Selection of households is done through random sampling; 100 households (18.69% of total household) out of 535 households were selected.
- Personal Interview- A research method in which there is face to face interaction between the researcher and an individuals.

Simple percentage has been calculated for easy understanding of the data. Either a male or female member from each household was taken as respondents.

RESULTS AND DISCUSSION

The analysis of the area reflects different results for the living conditions and social conditions of people in Bilawal. The living conditions and social conditions are observed using various indicators. The results for the analysis are-

1. Living Conditions

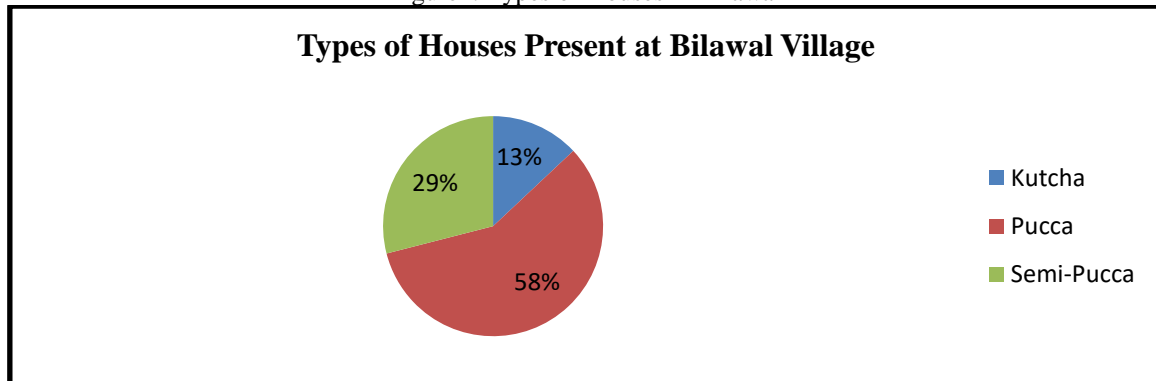
1.1 Types of houses

We observed the different kinds of houses at the study area i.e. Bilawal village and here we have observed a panoramic view of three types of houses namely, Pucca house, Semi pucca house, Kutcha house. The housing condition of the sampled households is presented in table with figures. The data reflects that major portion of the population resides in pucca houses and only a few household are living in kutcha houses i.e. 13 percent only, whereas 29 percent people lives in semi pucca house.

Table3. Types of houses in Bilawal

Types	Actual data	Value in %
Kutcha House	13	13
Semi Pucca House	29	29
Pucca House	58	58
Total	100	100

Figure2. Types of Houses in Bilawal



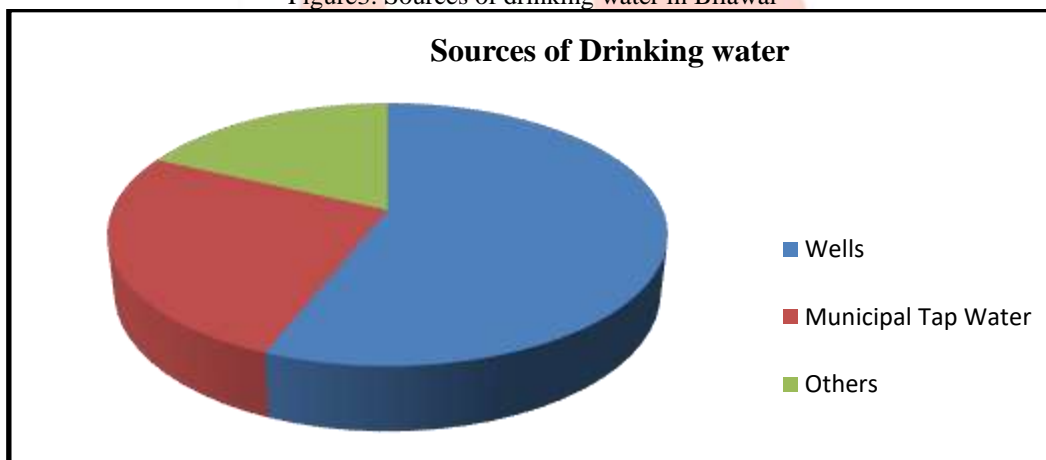
1.2 Drinking Water Supply

Table4 and Figure3 shows the water supply conditions in the sampled households. About 56 percent houses used Wells, 26 percent houses depend on other municipal tap water supply, and 18 percent houses depend upon the other sources of water. It reflects that there is still significant number of population that does not use wells as one the water supply sources.

Table4. Sources of drinking water in Bilawal

Sources of Water	In Number	In Percentage
Wells	56	56%
Municipal tap water	26	26%
Others	18	18%
Total	100	100%

Figure3. Sources of drinking water in Bilawal



1.3 Sanitation conditions

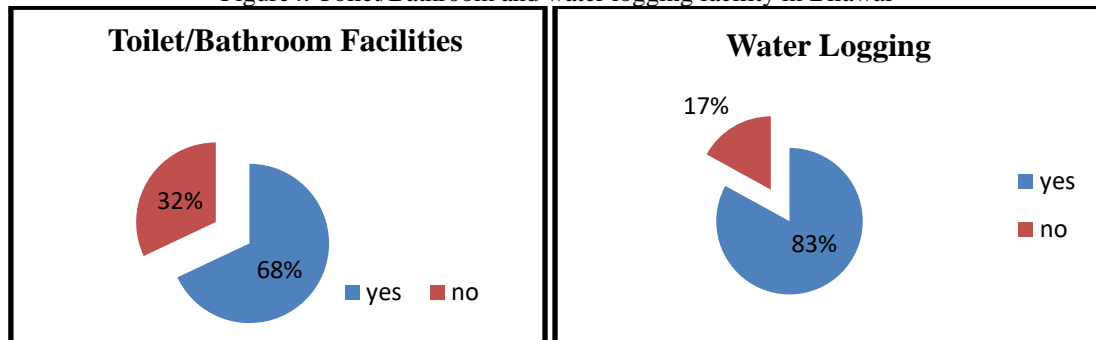
The sanitation conditions are not so satisfactory in Bilawal village. In Perspective of toilet facility out of 100 houses, 68 houses have the facility of toilet, and 32 houses don't have toilet facilities. There still exists a huge number of mass that still have the open defecation.

Water logging is main problem, out of 100 houses 83 houses reported about water logging and 17 houses don't have water logging problem. It means that level of water logging is very high the area which is leading to the hindrances in activities of the people, mainly the transportation activities are affecting very deeply.

Table5. Toilet/Bathroom and water logging facility in Bilawal

Toilet/ Bathroom facility		Water logging	
Yes	68	Yes	83
No	32	No	17
Total	100	Total	100

Figure4. Toilet/Bathroom and water logging facility in Bilawal



2. Social Condition

2.1 Age Structure

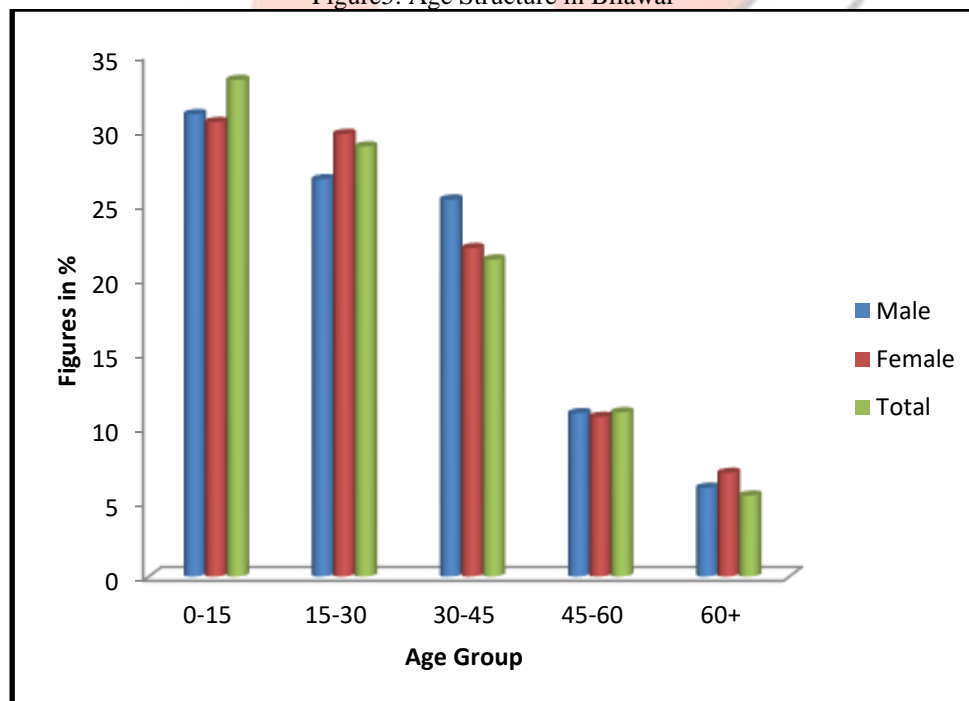
The Table6 and Figure7 shows the age structure in the sampled household .In this village out of the total population, 33.36 percent comes under 0-15 age group, 28.89 percent under 15-30 age group, 21.29 percent under 30-45 age group, 11.03 percent under 45-60 age group and 5.43 percent under above 60. The dominating age-group in terms of female population is 0-15 where 30.53 percent of female population resides. Similarly in case of Male population, the dominating age group is 0-15 where 31.06 percent of male population resides.

Table6. Age Structure in Bilawal

Age group	Males (in %tage)	Females (in %tage)	Total (in %tage)
0-15	31.06	30.53	33.36
15-30	26.69	29.73	28.89
30-45	25.32	22.06	21.29
45-60	10.97	10.72	11.03
Above 60	5.96	6.96	5.43
Total	100	100	100

Maximum population is covered by 0-15 age group.

Figure5. Age Structure in Bilawal



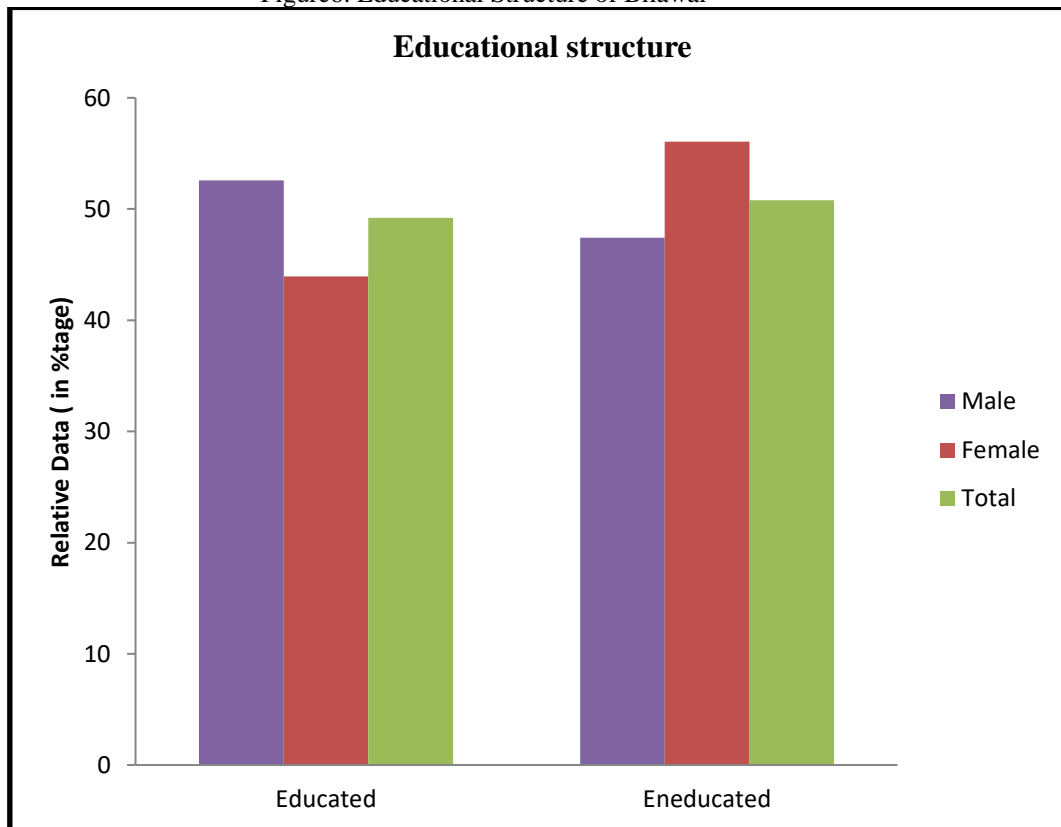
2.2 Educational Structure

The Table7 and Figure8 present the educational structure in the sampled households. According to sampled population, only 52.58 percent of males and 43.94 percent of females are educated and rest 47.41 percent males and 56.05 percent females are uneducated. However, out of the total population, 49.21% of population is educated and 50.78 percent of population is uneducated. It shows that still majority of females are uneducated in this area; same as for the male population.

Table7. Educational Structure of Bilawal

Education	Male		Female		Total	
	Absolute Data	Relative Data (in %tage)	Absolute Data	Relative Data (in %tage)	Absolute Data	Relative Data (in %tage)
Educated	183	52.58	98	43.94	281	49.21
Uneducated	165	47.41	125	56.05	290	50.78
Total	348	100	223	100	571	100

Figure6. Educational Structure of Bilawal



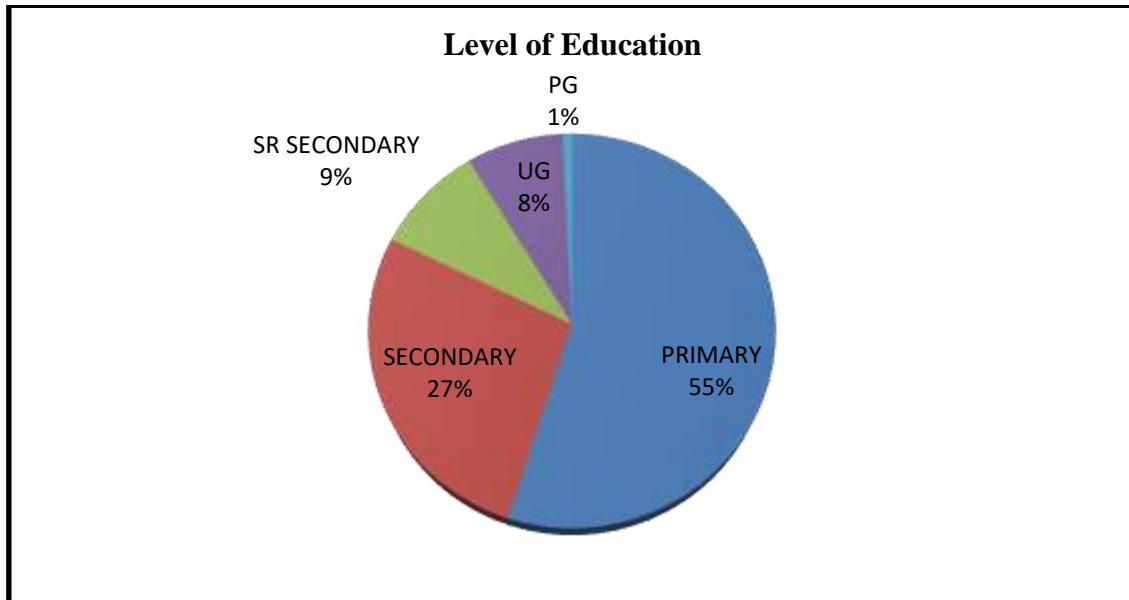
The Table8 and Figure 7 show the level of education in the studied village. 54.92 percent of population is indulged in primary education, 27.27 percent of population in secondary education, 9.09 percent of population in senior secondary education, 7.95 percent of population in U.G education, 0.75 percent of population in P.G education. The level of education at primary level shows a good picture of area but declining rate with the increasing level of education is worrisome. The majority of people are educated only upto secondary level of education only.

Table8. Education level in Bilawal

Persons / Level of education	Male		Female		Total	
	Absolute data	Relative data	Absolute data	Relative data	Absolute data	Relative data
Primary	97	56.06	48	52.44	145	54.92
Secondary	37	21.38	35	38.46	72	27.27
Senior Secondary	19	10.98	5	5.49	24	9.09

U.G	18	10.40	3	3.29	21	7.95
P.G	2	1.15	0.00	0.00	2	0.75
Other	0.00	0.00	0.00	0.00	0.00	0.00
Total	173	100	91	100	264	100

Figure7. Education level in Bilawal



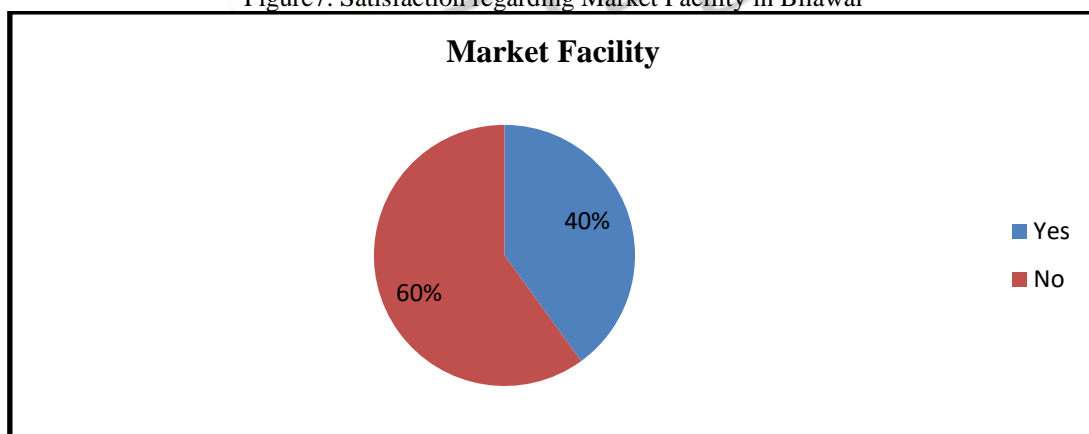
2.3 Market Facility

Table8 and Figure7 show the market facility in the sampled household. More than 50 percent of people are unsatisfied with market facilities available to people. The market in the area is not developed due to lack of transportation facilities, only few products of daily use are available in the local market.

Table8. Satisfaction regarding Market Facility in Bilawal

Category of Satisfaction	Degree of Satisfaction
Satisfied	40%
Unsatisfied	60%
Total	100%

Figure7. Satisfaction regarding Market Facility in Bilawal



2.4. Transportation Facility

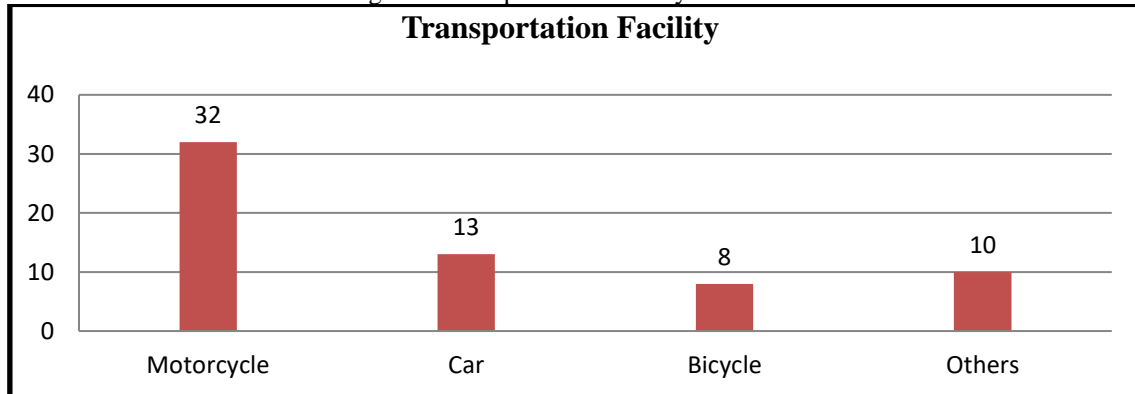
Table9 and Figure8 show the transportation facility in the sampled household. As we can see in the data that the transportation facilities are developed like only 20.63% of people have cars and almost 51% of people have Motorcycle. A very few people are using the environment friendly vehicle i.e. bicycle, resulting the quality of environment in the area.

Table9. Transportation Facility in Bilawal

Vehicles	Actual Number	Percentage
----------	---------------	------------

Motorcycle	32	50.80
Bicycle	8	12.69
Car	13	20.63
Others	10	15.88
Total	63	100

Figure8. Transportation Facility in Bilawal



CONCLUSION

The main business of people in Bilawal village is to cultivate, but some people are also engaged in private and government jobs. Now, with the changing era, people have also got engaged in secondary activities rather than primary activities, in which the mining industry is playing an important role in development of the village where huge number of population of the village are employed as labor. Moreover, it can gradually increase the employment level of the village. The facilities in the village are electricity, road, and pipelines for drinking water and wells and Canals for irrigation.

PROBLEMS

The analysis done in the current paper reflects existence of lot of problems in the village. There is lack of health facilities and hospitals. The area is facing many problems such as problems regarding education, proper drainage, lack of market facilities, lack of modes of communication, transportation, electricity availability, lack of water supply, unmetalled and damaged road problems, unemployment, lack of entertainment sources, problems related to sanitation etc.

SUGGESTIONS

There can be much Economic Development of the village if there should be a proper blockage-free metalled drainage system. Services of PHC (Public Health Centre) must be facilitated for proper health care of the local peoples on regular basis. Market system should be improved and new shops of fresh items (like-vegetables and other food stuff in packet forms) can be started, Facility of electricity should be given for 24 hours. There should be a proper transport system too. Education is a very important need for human development and to make the rural people aware about the benefits of education, government and other NGO's should run many awareness programs (such as-street play etc.). Water facilities are not so developed in that village and impure water is also a big problem, so responsible authorities have to take suitable steps against these problems. Awareness of the people about the benefits of bathroom and toilet facilities could improve the hygiene conditions of the area.

REFERENCES

- [1] Bansal,S. (2010). Rural Settlement Geography, Meenakshi Prakashan, Merut, 9-50.
- [2] <http://village.org.in/Bilawal>
- [3] <http://www.censusindia.co.in/villages/bilawal-population-bhiwani-hariyana-61524>
- [4] <http://www.haryana21.com/distt-villages/village.php?villageid=413>
- [5] https://en.wikipedia.org/wiki/Bilawal,_Bhiwani
- [6] <https://indikosh.com/vill/64800/bilawal86>
- [7] <https://soki.in/bilawal-badhra-bhiwani>
- [8] <https://villageinfo.in/haryana/bhiwani/badhra/bilawal.html>
- [9] <https://www.accuweather.com/en/in/bilawal/3044828/weather-forecast/3044828>
- [10] <https://www.accuweather.com/en/in/hr/haryana-weather>
- [11] <https://www.mapsofindia.com/villages/haryana/bhiwani/dadri/bilawal.html>
- [12] <https://www.slideshare.net/charujaiswal/socio-economic-survey-on-siswan-by-charu-jaiswal>
- [13] <https://www.wikivillage.in/village/haryana/bhiwani/badhra/bilawal>
- [14] Singh,R.L. and Rana P.B. Singh.1978, Transformation of Rural Habitat in Indian Perspective, A Geographical Dimension,NGSI,Varansi.
- [15] Tiwari,R.C. (1984). Adhiwas bhoogol, Prayag Pustak Bhavan, Allahabad, 2806.